

Escalator



Advantages of escalators

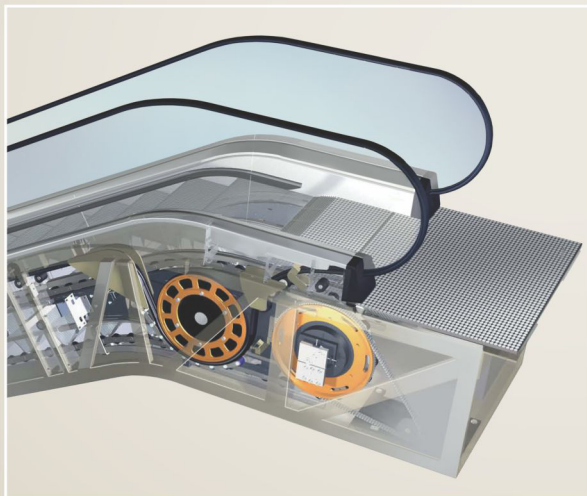
- The truss utilizes first class rectangle steel with unique structure, high strength and nice anti-corruption durable features.
- The overall design is concise, smooth and compatible.
- The advanced international craftsmanship ensures the accuracy of steps.
- The large size diameter of step roller operates minimizes the noise and prolongs the product life.
- The human-oriented handrail entrance is secured by brush.
- The skirt together with interior and outside deck uses deluxe stainless steel.
- The super CPU main board monitors the operation in real time. If any abnormal situation occurs, It automatically brakes and records the malfunctions code.
- Customer can choose VVVF control to control running speed, the energy saving performance is obvious.

S310-30K COMMERCIAL ESCALATOR

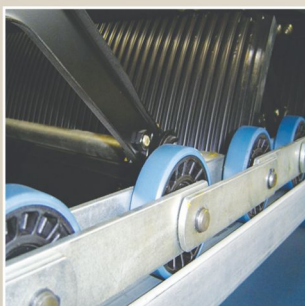
- ▶ Escalator suitable for hotels, office buildings, super markets, and airports.
- ▶ The step width can be 600mm, 800mm and 1000mm.
- ▶ The inclination can be 30° & 35°.
- ▶ The alternative function includes VVVF, auto-lubrication & error analysis.
- ▶ The requirements can be customized.

Functions

- ▶ Automatic inspection status transformation
- ▶ Handrail entrance device
- ▶ Up and down start key
- ▶ Emergency button/operation brake control
- ▶ Broken step chain safety device
- ▶ Comb safety device/ Protection from over speed
- ▶ Non-reversing safety device
- ▶ Inspection device
- ▶ Overload protection
- ▶ Control device for handrail breakage
- ▶ Phase monitoring relay
- ▶ Auxiliary brake [H>6.0m]

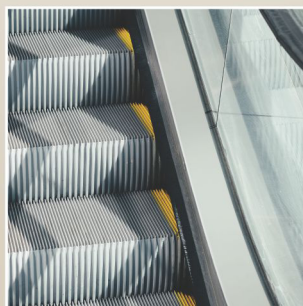


Smooth operation



MakNet uses hydrolysis-resistant polyurethane step rollers. These are the most reliable rollers on the market. They ensure smooth running even in tropical and subtropical regions.

Long service life



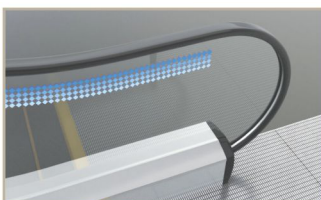
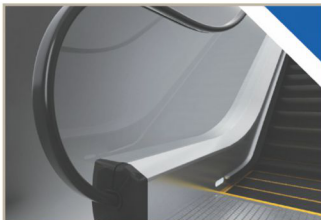
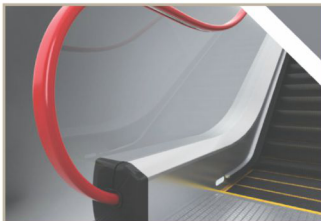
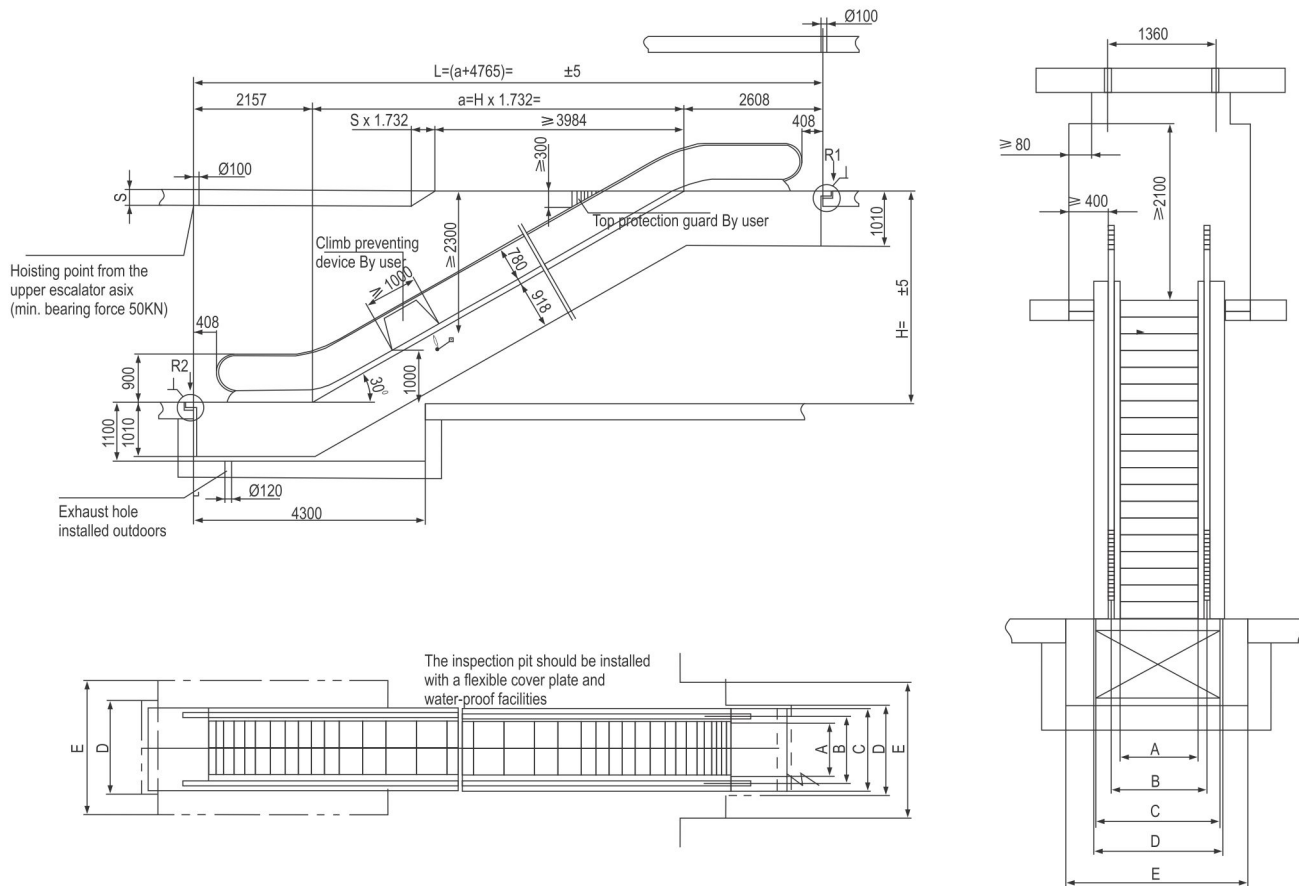
MakNet is committed to designing for a service life of over 20 years. For example, the microprocessor-controlled lubrication system, which feeds the precise amount of lubricant to every lubrication point. Such attention to detail ensures a long service life for all mechanical parts.

Quiet running – quiet drive units



The MakNet is quieter in operation than other leading commercial escalator brands.

30° Escalator Construction layout parameters



Model	Travelling height (mm)	Net weight KN	Supporting		Motor Power	Transport size	
			R1 KN	R2 KN		H	L
SME(600)-35 (4500/h) speed 0.5m/s	3000	57	46	41	8	2750	10900
	3500	60	49	44		2780	11890
	4000	64	52	47		2910	12880
	4500	68	56	50		2830	13870
	5000	71	59	53	11	2840	14860
	5500	75	62	56		2860	15860
	6000	79	65	59		2870	16860
SME(800)-35 (6750/H) speed 0.5m/s	3000	59	52	47	8	2750	10900
	3500	63	56	50		2780	11890
	4000	67	60	54		2810	12880
	4500	71	64	57		2830	13870
	5000	74	68	60	11	2840	14860
	5500	82	74	66		2860	15860
	6000	86	78	69		2870	16860
SME(1000)-30 (9000/H) speed 0.5m/s	3000	63	59	53	8	2750	10900
	3500	67	64	57		2780	11890
	4000	71	68	61		2810	12880
	4500	75	73	65		2830	13870
	5000	83	79	71	11	2840	13610
	5500	87	84	75		2860	15860
	6000	92	88	79		2870	16860